

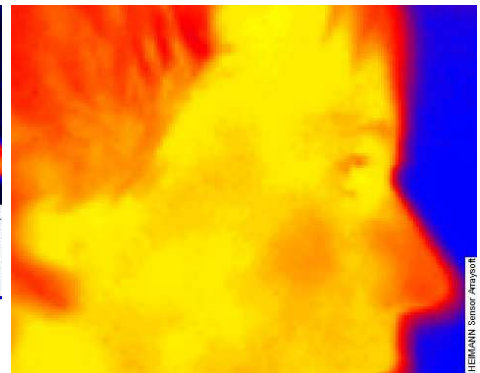
Quick Start Application Set

For thermal imaging and easy application of our arrays we designed an evaluating processor unit in a modular metal case for better handling. The module's field of view depends on housing, the built-in lens and can be varied on demand. The object temperature range depends on array type and lens.

There are several types of application sets, for each array type an application set is available. The application set processes the data and communicates via Ethernet/UDP to a PC. On PC side the data stream can be visualized and logged with a Graphical User Interface. The given software allows you to start your measurements and testing almost immediately.

Applications

- Person detection
- Fire detection
- Hotspot detection
- Energy management
- Security cameras
- Industrial process control
- Air condition control
- Position detection

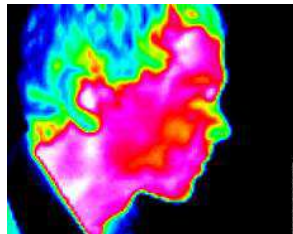


Benefit

- Low cost TO8/TO39/TO46 housing
- Resolutions 8x8/16x16/32x32/80x64 available
- Low power consumption
- Short time constant
- High sensitivity of the system
- No need for shutter and thermal stabilization

Features:

- Communications via RJ45/Ethernet/UDP
- False color images with auto scaling
- Selectable frame rate
- Data log mode
- Contrast adjustment
- Interpolation
- Temperature display
- Several lenses for different field of view



Included in delivery:

- Array module
- Interface cable
- AC adapter (100V~ ... 240V~) or USB cable for power supply
- Tripod
- Graphical User Interface (GUI) for visualization

Module dimension:

- Diameter 28 mm; length approx. 55 mm (length depends on chosen lens)

